

6040 P10 GEL G1 H1200

CIAM

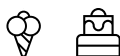


Gelato Showcase.

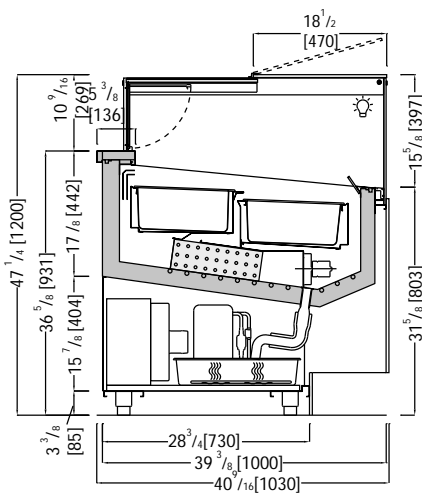
Innovative patented glass structure | heated glass sides | sliding glass top on operator side with soft closing system and folding glass opening with magnetic clamps | glass top on customer side with upward opening | front and side LED light fixture | bright aluminum profiles | Tank insulated with ecological polyurethane and covered in stainless steel | ventilated refrigeration with increased "delivery port" | reverse cycle defrost | electronic control unit and digital temperature reader flush with the worktop | worktop and perimeter shelf in polished steel | pre-arrangement for 5lt pans dim. $14 \frac{1}{16} \times 6 \frac{7}{16} \times 4 \frac{11}{16}$ [360 x 165 x 120] not supplied | supporting frame in galvanized steel with height adjustable stainless steel feet | technical compartment and open compartment in polished stainless steel



0°F



*Measure are subject to revisions/updates, please refer to manufacturing drawing at order confirmation



Technical



- Ventilated
- Automatic / reverse cycle
- R452A
- N. 4 / H.R. 55% max 75 °F
- Hermetic
- 220 V / 3 Ph / 60 Hz
- Led no-spot 3000°K
- 0°F

Data Sheet (internal power)

Model Code	Dimensions L x D x H Inches	Weight Lbs	Max Pwr. Consumption W / A	Avg Operating Consumption KW/h	Cooling Power/Expansion BTU / °F	GAS Type
 SQ10G1GL12I (+PANELS)	45 1/4 x 40 9/16 x 47 1/4 51 15/16 x 47 5/8 x 58 11/16	397 265	1700 / 9.0	0.9	1191 / -31	R452A
 SQ10G1GL18I (+PANELS)	64 15/16 x 40 9/16 x 47 1/4 71 5/8 x 47 5/8 x 58 11/16	573 364	2200 / 11.5	1.2	2559 / -31	R452A
 SQ10G1GL24I (+PANELS)	84 5/8 x 40 9/16 x 47 1/4 91 5/16 x 47 5/8 x 58 11/16	661 463	2700 / 14.0	1.8	3071 / -31	R452A
 SQ10G1GL1212I (+PANELS)	84 5/8 x 40 9/16 x 47 1/4 91 5/16 x 47 5/8 x 58 11/16	705 463	3400 / 16.0	1.9	1191+1191 / -31	R452A

Optionals: *Measure are subject to revisions/updates, please refer to manufacturing drawing at order confirmation

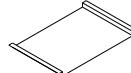
*Crate weight only



CIV61
s/s pan inches
14 1/16 x 6 7/16 x 4 11/16
[360x165x120]



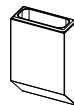
CIV63
s/s pan inches
14 1/16 x 9 12/16 x 3 2/16
[360x250x80]



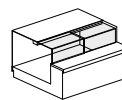
CIVF95
s/s display tray



GSG02
Perspex pan



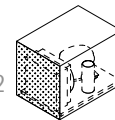
CIV56
s/s dipper well



SCORTF01-03
L-shaped doors



PASPRO
Switch from
-0.4°F to +39.2°F



CIT44
Easy Clean Filter



CIM08
Kit wheels