



Available in 4-6-8-10 Cylinder Double Deep Cabinets w/ Full Ventilation



Every Sprint Pozzetti comes
with "Locking Wheels"



All Sprint Pozzetti Cabinets
are 120 Volt. No special
electricity required!

Key Features:

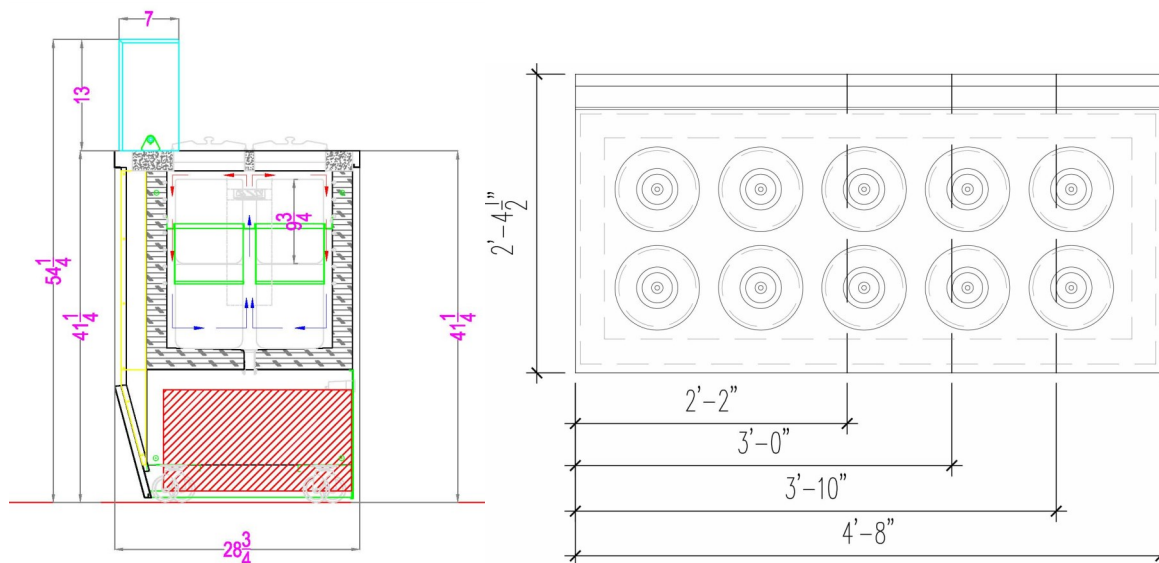
- Fully Ventilated
- Anti-Rotation notch to keep tubs from spinning when scooping
- Layout Flexibility: Can be customized and grouped to fit just about any look and layout.
- 120V./1Ph. Electricity
- Double deep for storage of product
- Locking Wheels

The Pozzetti is a traditional way of storing your frozen products. Instead of a visual display which allows the product to be seen through a glass top, this style of display keeps the product perfectly tempered and adds a stunning, classic, look to your store. It features two layers of tubs, one for serving and one for storing, an easy to clean stainless steel top, and casters for easy portability. All Sprint cabinets are ventilated to maintain superior product consistency.



ADVANCED GOURMET
EQUIPMENT & DESIGN

SPRINT POZZETTI



TECHNICAL FEATURES		VERSIONS			
		4+4 TUB	6+6 TUB	8+8 TUB	10+10 TUB
Refrigeration	Type	Ventilated	Ventilated	Ventilated	Ventilated
Operating Temperature	°C/°F	-18/-0.4	-18/-0.4	-18/-0.4	-18/-0.4
Compressor	No./Type	1/self contained	1/self contained	1/self contained	1/self contained
Electric Supply	V/Ph/Hz	120/1/60	120/1/60	120/1/60	120/1/60
Refrigerant Gas	Type	R404A	R404A	R404A	R404A

Note: Actual finished dimensions to be taken only from CAD drawings provided by Advanced Gourmet



AG ADVANCED GOURMET
EQUIPMENT & DESIGN
United States Importer Of:
Design & Tecnologia su misura
CIA
CIAM DESIGN CENTER
AdvancedGourmetDisplays.com
AdvancedGourmet.com
O: 336-856-2919 F: 336-217-8838
Sales@AdvancedGourmet.com