

CIAO VD

GELATO DISPLAY

Project:
Quantity:

Item:



Finish Options:

Okite- quartz based granite, RAL color system, ALPI wood laminates, Arpa laminates.



Optional Features:

- Operator side night curtain
- Casters
- Dipper well
- Stainless steel cake display insert

Standard Features:

- Flavor labels with back lighting
- Fan ventilated refrigeration system with double finned evaporator
- Dual air flow
- Auto reverse defrost cycle
- Digital control panel
- Tempered lift up top glass
- Sliding plexiglass doors-operator side
- LED lighting



AG ADVANCED GOURMET

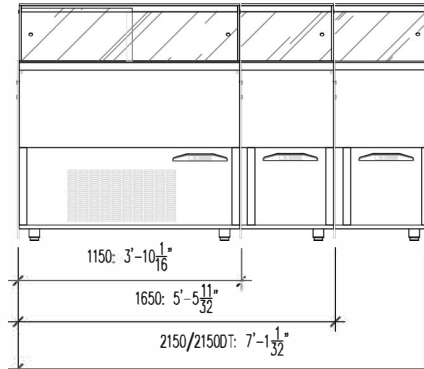
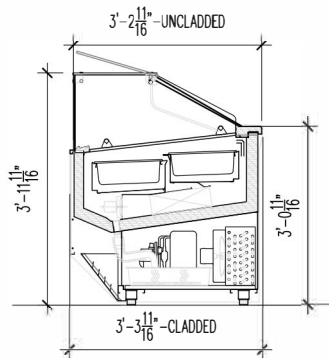
EQUIPMENT & DESIGN

Street: 5C Wendy Ct, Greensboro, NC 27409
Mail: PO Box 18542, Greensboro, NC 27419
P: 336.856.2919 F: 336.217.8838

Sales@AdvancedGourmet.com
AdvancedGourmet.com
PacojetUS.com AdvancedGourmetDisplays.com

CIAO VD

GELATO DISPLAY



*LENGTHS SHOWN ARE CLADED. SIDE PANELS ARE APPROXIMATELY 1CM/4" THICK EA.

TECHNICAL FEATURE	VERSIONS	1150	1650	2150	2150 Double Temp.
		External dimensions (L-D-H)	inches mm	46-1/16" x 38-11/16" x 47-11/16"	65-11/32" x 38-11/16" x 47-11/16"
Crated dimensions (L-D-H)	inches mm	53" x 44" x 54"	72" x 44" x 54"	92" x 44" x 54"	92" x 44" x 54"
Pans layout 5,2 Lt / mm. 360x165x120h 14 1/8" - 6 1/2" - 4 3/4"	flavors nr. / configuration	12	18	24	24 (12+12)
Pans layout 5,2 Lt / mm. 360x250x80h 14 1/8" - 10" - 3 1/8"	flavors nr. / configuration	8	12	16	16 (8+8)
Refrigeration	Type	Fan Ventilated	Fan Ventilated	Fan Ventilated	Fan Ventilated
Refrigerated display area	Type	Deck	Deck	Deck	Deck
Operating temperature	°C / °F	-18 / -0.4	-18 / -0.4	-18 / -0.4	-18 / -0.4
Compressor	nr. / Type	1 / hermetic	1 / hermetic	2 / hermetic	2 / hermetic
Cooling power *	(W)	630	860	1050	550+550
Electric supply	(V/ph/Hz)	220/3/60	220/3/60	220/3/60	220/3/60
Power consumption	(W/A)	1700/9,0	2200/11,5	2700/14,0	3000/15,0
Defrost	Mode / type	reverse cycle	reverse cycle	reverse cycle	reverse cycle
Climatic class	N°/°C/F°/H.R.	4+/30/55%	4+/30/55%	4+/30/55%	4+/30/55%
Refrigerant Gas	Type	R404A	R404A	R404A	R404A
Net weight	Kg - Lb	210 / 462	278 / 612	320 / 705	340 / 749
Crated weight	Kg - Lb	305 / 672	408 / 899	480 / 1058	500 / 1102

* Installation of electrical to be completed by contracted electrician

* Machines do not come with cord or plug and require proper connection within the guidelines of local area

* Actual finished dimensioned to be taken only from CAD drawings provided by Advanced Gourmet

* Contact Advanced Gourmet for CAD files

AG ADVANCED GOURMET
EQUIPMENT & DESIGN

United States Importer of:

