



# JOF ONE & JOF 23

## Blast Chiller/Blast Freezer



JOF One



JOF 23



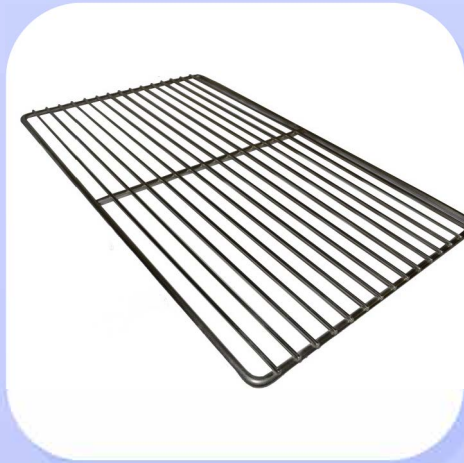
- Stainless Steel Construction
- Electronics for cycle selection and versatile control of operations
- Stainless steel shelving available
- Large capacity for small places
- Shelves NOT included, order separately



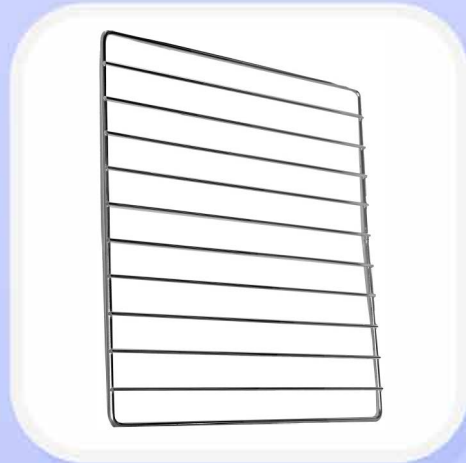
Offered Exclusively in the United States by:



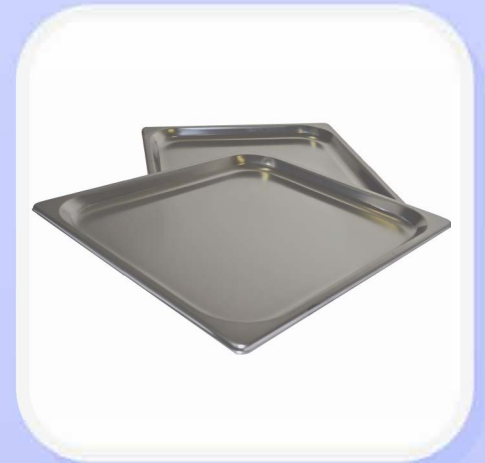
# ACCESSORY OPTIONS



**JOF-One Wire Shelf:**  
W:23-1/2"  
D:15-3/4"

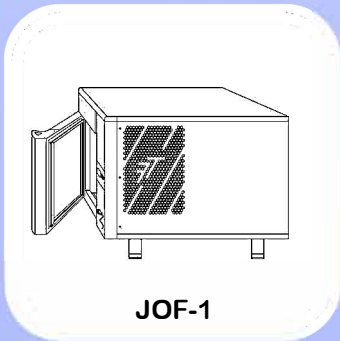


**JOF-23 Wire Shelf:**  
W:14"  
D:12-3/4"



**JOF-23 Aluminum Pan:**  
W:14"  
D:12-3/4"

# TECHNICAL SPECIFICATIONS



	<b>JOF-ONE</b>	<b>JOF23-A</b>
<b>Capacity</b>	2.9 Ft. <sup>3</sup> 3 Optional Trays	1.18 Ft. <sup>3</sup> 3 Optional Trays
<b>Performance</b>	Freezing capacity to -40°F	Freezing capacity to -40°F
<b>Internal Dimensions</b>	16.5"L X 24"D X 12.8H	13.39"L X 14.17"D X 10.63"H
<b>External Dimensions</b>	26.4"L X 29.5"D X 19.7"H	23.62"L X 2 3.62"D X 15.35"H
<b>Electrical</b>	208-230V / 1PH / 60Hz/15Amp	115V/60Hz/15Amp
<b>Running Amps</b>	6Amps	11Amps.
<b>Refrigerant</b>	R404A	R404A
<b>Total Weight</b>	150 LB	106LB



Street: 5-C Wendy Court Greensboro, NC 27409 | Mail – P.O. Box 18542 Greensboro, NC 27419  
Phone: 336-856-2919 | Fax: 336-217-8838  
[www.AdvancedGourmet.com](http://www.AdvancedGourmet.com) | [sales@AdvancedGourmet.com](mailto:sales@AdvancedGourmet.com)